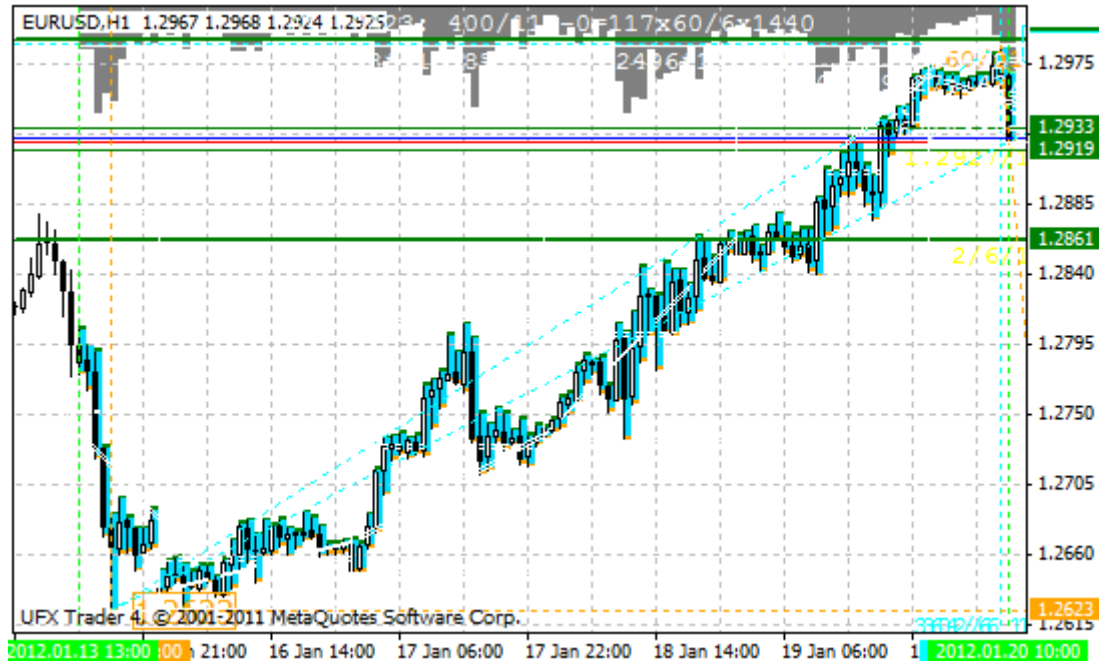


# AIS1 Advanced Indicator

The main purpose of this indicator is the expansion of the information part of the graph. This indicator is suitable for non-automatic trading.

Recommended for use on a minute and fifteen minutes time interval. However, the specific time frame depends on the trading system.



To learn more about this Indicator and download its source code on MQL4 you can here:

<http://codebase.mql4.com/5337>